



Tastotherm Profi - Series

Temperature measurement by contact - precise, fast and easy to use

Microprocessor controlled instruments for accurate temperature detection with thermocouple probes type K. These units are found in nearly every industrial and research area.

The device *MP 2001* additionally comes with an internal memory for 956 measuring values incl. date and time.

The evaluation software „PortaWin“ enables to read out the values from the built-in-memory or can also be used permanently online.

Typical applications:

- Maintenance and servicing
- Work shop and production area
- Quality control
- Laboratory and research
- Food fabrication (baking, freezing, roasting)



Carrying bag
Order-No. 3 749 680



Scope of delivery:

MP 2000: instrument without probe, inspection sheet, user manual, battery (9 V), supply in INFRAPOINT-Box

MP 2001: as *MP 2000*, additionally with works certificate and 3 calibration points (0, 150 and 600 °C) user manual and battery (9 V), supply in INFRAPOINT-Box

- 200 ... 1300 °C
- 328 ... 2372 °F

Portable temperature measurement

Technical Data	MP 2000	MP 2001
Measuring range	-200 ... 1300 °C	-200 ... 1300 °C
Resolution	-50 ... 399 °C: 0.1 K, otherwise: 1 K	-50 ... 399.9 °C: 0.1 K, otherwise: 1 K
Accuracy	for instrument temperatures of 15 ... 30 °C: 0.4 K + 0.1 % of the absolute value of the measured temperature in °C + 1 Digit; otherwise: 1 K + 0.2 % of the absolute value of the measured temperature in °C + 1 Digit	for instrument temperatures of 15 ... 30 °C: 0.2 K + 0.07 % the absolute value of the measured temperature in °C + 1 Digit; otherwise: 0.4 K + 0.14 % of the absolute value of the measured temperature in °C + 1 Digit
Repeatability	0.3 K + 1 Digit at constant instrument temperature	0.1 K + 1 Digit at constant instrument temperature
Sampling rate	Display: 3 values/ s	Display: 5 values/ s
Interface	RS 232 output, 4800 Bd, 1 value/ s	RS 232 output, 4800 Bd, 5 values/ s
Display	LCD, 2 x 4 Digit	LCD, 2 x 4 Digit
Keyboard	4 keys	5 keys
Memory	-	for 956 values incl. date and time
Storage interval	-	1 to 1000 s adjustable or on key pressed
Real time clock	-	with long life battery
Plug style	Thermocouple, mini-plug acc. to ISA-standard, type K	Thermocouple mini-plug acc. to ISA-standard type K
Analogue output	-	1 mV/ °C or 0.5 mV / °F
Power supply	9 V battery, battery life approx. 70 h	9 V battery, battery life approx. 120 h (70 h at operation RS 232)
Measuring functions	HOLD, surface/ immersion mode MIN-, MAX-, AVG-function, °C or °F	HOLD, surface/ immersion mode, MIN-, MAX-, AVG-function, °C or °F, auto-off or continuous mode, set date/ time, output and storage interval, store/ delete single value, output/ delete storage
Battery control	low battery warning symbol on the display	low battery warning symbol on the display
Weight	approx. 270 g (incl. battery)	approx. 300 g (incl. battery)
Dimensions	180 mm x 70 mm x 28 mm (L x W x D)	180 mm x 70 mm x 28 mm (L x W x D)
Operating temperature	0 ... 50 °C at housing	0 ... 50 °C at housing
Storage temperature	-10 ... 60 °C	-10 ... 60 °C
Order-No.	3 740 300	3 740 310

Range of probes

Electronic temperature measurement with the *Tastotherm Profi-Series*:

The mobile measuring system - a reliable and comfortable solution. Probes with NiCr-Ni thermocouples guarantee exact measuring values across the whole measuring range.

Standard probes: Tolerance class 1 according to DIN IEC 584

Probe	Description	Order-No.
	OT 2000 Probe for surface and immersion measurement, up to 600 °C, Response time: 5 s, Cable: 1.5 m	3 759 110
	BT 2000 Mineral insulated probe, extremely thin and fast, up to 1100 °C, Response time: 3 s, Cable: 1.5 m	3 759 140
	ET 2000 Puncture/ immersion probe with slant tipped sheath, up to 600 °C, Response time: 5 s, Cable 1.5 m	3 759 130

Probes for surface and immersion measurement:

up to 600 °C, for immersion short term up to 800 °C, Tolerance class 2 according to DIN IEC 584

Probe	Description		Order-No.
	OT 1301 Standard probe in 3 different lengths, Response time: 5 s, Spiral cable: 1.8 m	OT 1301K 60 mm	3 741 020
		OT 1301M 150 mm	3 741 210
		OT 1301L 250 mm	3 741 010
	FOT 1301 Flexible sheath with a constant application force of 20 N, Response time: 5 s, Spiral cable: 1.8 m	FOT 1301K 60 mm	3 741 120
		FOT 1301M 150 mm	3 741 220
		FOT 1301L 250 mm	3 741 110
	HOT 1301 Probe for measurement of places difficult to access, Response time: 5 s, Spiral cable: 1.8 m	HOT 1301M 125 mm	3 741 170
HOT 1301L 210 mm		3 741 030	

Special probes for surface measurement: Tolerance class 2 according to DIN IEC 584

Probe	Description	Order-No.
	O 1301 Standard probe up to 1100 °C, (short time up to 1200 °C), Response time: 12 s, Spiral cable: 1.8 m	3 741 180
	WO 1301 Cylinder probe up to 250°C, spring-clamped thermocouple for cylindrical objects, Response time: 2 s, Spiral cable: 1.8 m	3 741 080
	GO 1301 Band surface probe up to 500 °C, Response time: 1-2 s, Spiral cable: max. length 1.8 m	3 741 130
	HO 1301M / HO 1301L Right angle band surface probe up to 300 °C (3 741 140) or up to 500 °C (3 741 090), Response time: 1-2 s, Spiral cable: 1.8 m	3 741 140 (M) (12/ 22mm) 3 741 090 (L) (15/ 50mm)
	RO 2000 Roller surface probe up to 200 °C, for running cylinders or sheets up to 200 m/ min, Response time: 3.5 s, Spiral cable: 1.8 m	3 741 190

Special probes for immersion measurement only gaseous, liquid or plastic media, Tolerance class 1 according to DIN IEC 584

Probe	Description	Order-No.
	BT 1301 Flexible mineral insulated probe, inconel sheath, very robust, short time up to 1100 °C, short time up to 1200 °C, Response time: 5 s, Spiral cable: 1.8 m	3 741 040
	BT 1301D Extremely thin and fast probe, mineral insulated, inconel sheath, up to 1100 °C, short time up to 1200 °C, Response time: 0.5 s, Spiral cable: 1.8 m	3 741 050
	ET 1301 Puncture probe up to 600 °C with slant tipped sheath for measurement of plastic media, Response time: 3 s, Spiral cable: 1.8 m	3 741 070
	ET 1301K Puncture probe up to 600 °C with slant tipped sheath and adjustable depth gauge for measurement of plastic media, Response time: 3 s, Spiral cable: 1.8 m	3 741 060
	FT 1301 Flexible thermocouple probe up to 350 °C, measurement in ovens or in electrical applications	3 758 270
	FT 1202 Exposed thermocouple element, thermal wire glass fibre insulated up to 400 °C, with plug and 2 m thermal cable	3 758 250

All response times: T99 in water

Please ask, if special kind of probes are needed.

Accessories probes	Order-No.
Miniature Thermocouple plug <i>KT 1202</i>	3 758 090
Miniature Thermocouple socket <i>KTB 1202</i>	3 758 290
Thermocouple wire (per meter)	3 749 480
Probe extension cable, length 5 m	3 749 420
Stainless steel probe protection tube for <i>BT 1301</i> , 400 mm	3 749 530
Probe quiver 100 mm	3 749 220

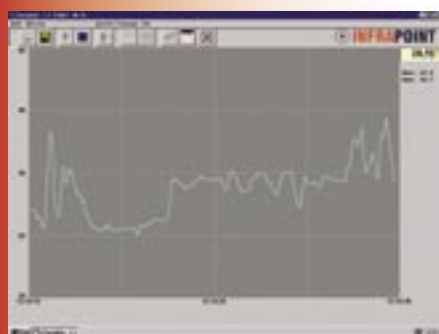
Accessories <i>MP 2000/ 2001</i>	Order-No.
Battery, 9 V	7 749 113
Rechargeable battery, 9 V	7 749 106
Thermal conductor silicon paste	3 749 500
Carrying bag <i>MP 2000/ 2001</i>	3 749 680
Carrying case <i>MP 2000/ 2001</i>	3 749 700
Analogue cable	3 749 720
Software „PortaWin“ incl. connection cable	3 749 810



Carrying bag



Carrying case



Software „PortaWin“

Get the most out of your temperature measurement by using the evaluation software PortaWin. This software enables the display of measured values of the **Tastotherm** instrument online in real time on your PC screen. The connected *MP 2000/ 2001* instrument is recognised automatically by the program. Also it is an easy method of reading the data in the internal memory to display and save on a PC. Present the measured data in either a table or graph and export it via the ASCII-interface to your preferred software package.